

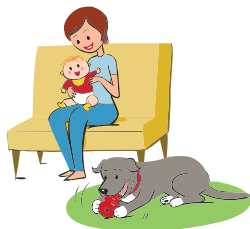
## Dog and Baby Safety



**DO** invite dog over for a sniff



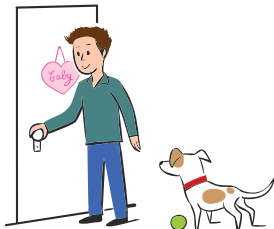
**Don't** force interaction



**DO** include dog in a comfortable and safe way



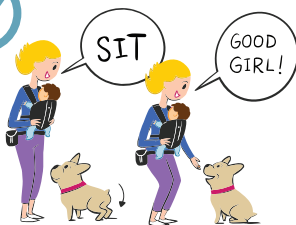
**DON'T** isolate dog from family



**DO** close the door to the nursery



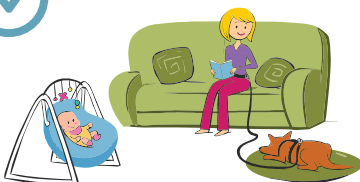
**DON'T** allow unsupervised access to nursery



**DO** remind your dog what you want them to do



**DON'T** scold your dog when being curious



**DO** secure dog and use awake adult supervision



**DON'T** ever leave baby unsupervised