

Mini Excavators XE35U



XCMG FOR YOUR SUCCESS

Rated Power: 18.2 kW (24.4 hp)
Operating Weight With Cab: 4 200 kg (9,259 lb)
Operating Weight With Canopy: 4 100 kg (9,039 lb)
Standard Bucket Capacity: 0.12 m³ (0.16 yd³)

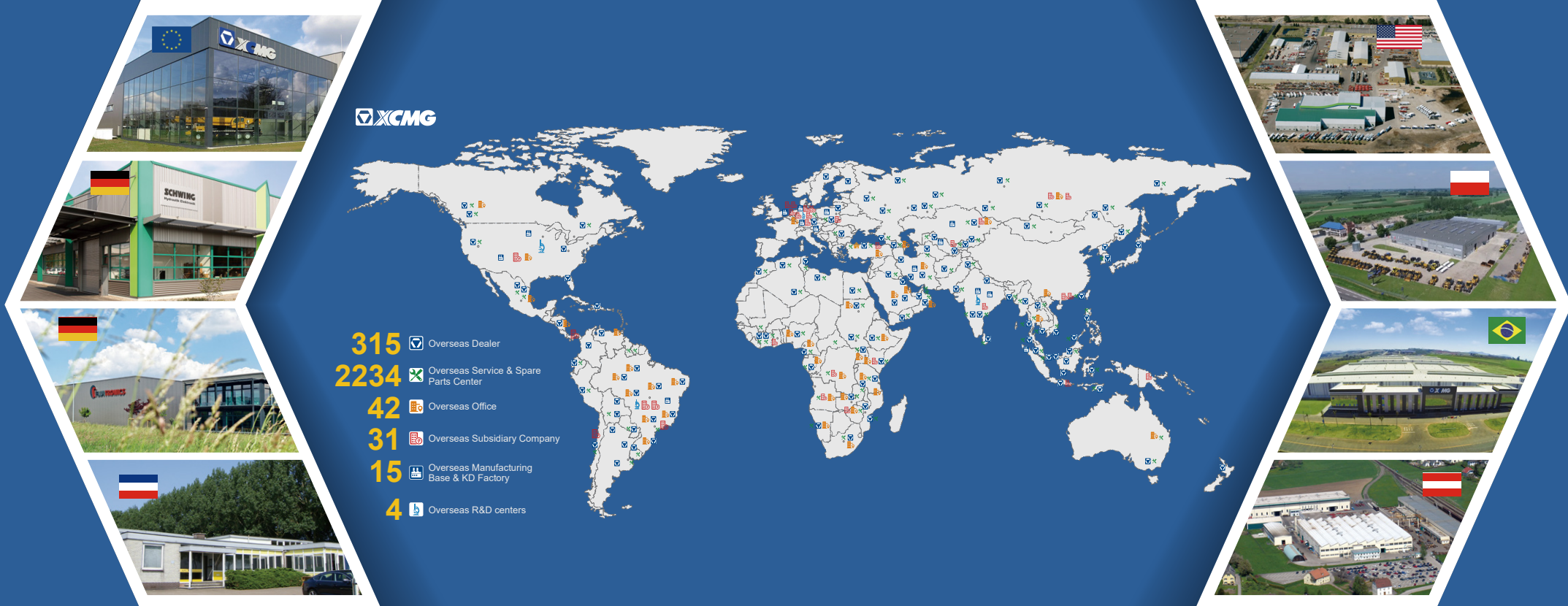
XCMG NORTH AMERICA CORPORATION
Add: 5145 Schirlls St. Las Vegas, Nevada 89118
Tel: +1 725 605 2777
Fax: +1 725 605 2888
E-Mail: bin@xcmg.com

XUZHOU CONSTRUCTION MACHINERY GROUP IMP. & EXP. CO., LTD
Add: No.1, Tuolanshan Road, Xuzhou Economic Developing Zone,
Jiangsu, China 221004
Tel: +(86) 516 8773 9285
E-Mail: bin@xcmg.com



www.xcmg.com





INTRODUCTION OF XCMG

Founded in 1943, XCMG is the largest enterprise in the Chinese construction machinery industry. We offer the most diverse product line and the highest technological standards. We provide a comprehensive set of construction solutions, and we are the most internationally competitive firm in the industry. On KHL Yellow Table, we rank No. 1 in China and No.3 globally.

Across our offices in China, the US, Germany, India, and Brazil, XCMG has established a global collaborative research platform including national-level R&D facilities focused on advanced smart manufacturing technology. Our R&D team consists of top talents from around the globe. They are researching cutting-edge technologies such as new energy, unmanned driving and high-end parts. Our work has earned us numerous international patents and awards.

XCMG has the most comprehensive product line, meaning we can offer fully comprehensive solutions in 9 areas: hoisting, earthwork, road building & maintenance, mining, concrete & paving, tunnel-building & underground construction, high-altitude firefighting equipment & special-purpose vehicles, railway & bridge construction, sanitation engineering. All these solutions can be customized to suit our customers' needs.

At XCMG, our five-continent sales network gives our products worldwide visibility. We have 300 overseas distributors, over 10 overseas manufacturing bases and KD (Knockdown) factories, and products in more than 180 countries and regions. We supply our global customers with pre-sales, mid-sales and after-sales service, and a convenient, efficient one-stop financing and leasing service. XCMG's total annual exports and overseas income consistently come top of the industry in China.

We care deeply for the welfare of the people. We support numerous charitable causes, and are quick to the scene during disaster relief efforts.

XCMG is all set to become an eternal brand with our feet on the ground and eyes on the horizon. XCMG's ambition leads us forever forwards. XCMG is scaling its Everest, and is determined to reach the top.

The XE35U comes with every feature you expect from a mini excavator in its tonnage.

Variable angle boom, 75° to the left and 50° to the right, and zero swing tail give you an edge when undertaking operations wherever space is confined.

Powered by a reliable 24.4 hp YANMAR engine, you can count on it to finish tough jobs in various operating conditions. When it comes to efficiency, versatility is a critical factor. That's why the machine is compatible to multiple attachments that can be installed within a short period of time with its hydraulic quick coupler. You will make full use of every second in the jobsite.





Compact Size with High Performance

A Superior Model with Passionate Design

Developed with the concept of “Safe, Reliable, Efficient, Comfortable”, the XE35U hydraulic excavator offers additional value to the operator. New features are presented making the machines more productive, versatile, and cost effective.

- Yanmar 3TNV88F Tier 4F engine, along with the load-sensing hydraulic system provides high operating efficiency and fuel economy.
- This compact excavator is designed and built to work on more jobsites while reducing risk of damage to the machine and its surroundings.
- Convenient accessible service points make maintenance easier and reduce your potential downtime.



Zero Tail Swing

Make the XE35U an advanced mini excavator. The 360° swing, excellent stability and smooth control, combined unmatched power and efficiency, makes it a versatile excavator which performs at its best in urban area's demolition, roadworks, land-scaping and much more.

Optimized Efficiency

Contributes to lower costs, increased productivity and maximum uptime, and a number of efficient features are combined on the XE35U. ECO (economy) mode allows you to choose the right machine setting for the job with impressive fuel efficiency.

Complete Equipped with AUX1, AUX2, and Quick Coupler lines.

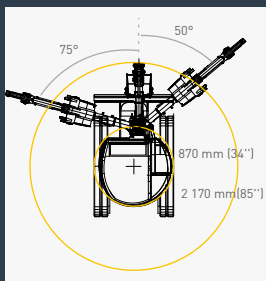
With the multiple programmable 2-way proportional auxiliary lines and quick-coupler piping the XE35U meets almost all your attachment needs.

Boom, Arm Safety Valves and Blade Holding Valve as Standard

The XE35U is fitted as standard with a boom cylinder safety valve, an arm cylinder valve and a dozer holding valve to dig and handle all your material in a safe way.

Engine Speed Knob

Together with ECO (economy) mode and auto-idle function, you can set your machine to work in the most efficient way for your application and reduce fuel consumption at the same time.



Operational Comfort

Large Operator Space with Ergonomic Control Layout

The XE35U offers the operator a large, comfortable workspace. The ergonomic layout of the controls, the travel pedals, and the adjustable wrist rests, are designed to reduce operator fatigue and increase productivity.



- 1 Foldable travel pedal
- 2 Washable floor mat
- 3 Adjustable seat
- 4 Emergency switch
- 5 Blade control handle
- 6 Control switches
- 7 Air conditioner
- 8 Colour LCD monitor
- 9 Electric proportional joysticks
- 10 Sliding window
- 11 Windscreenwiper fluid
- 12 Adjustable arm support

Easy Access for Maintenance

The tilting cab provides quick and easy access to all inspection and maintenance points

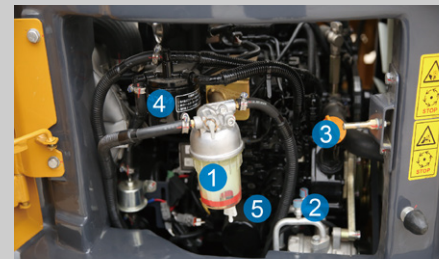
► Easy Service Access

Daily checks and regular service points including fuel and hydraulic oil fill are easily reached via the tiltable cabin. The main hydraulic valve and lines are also easily reached through a removable floor plate and side panels. The machine has durable steel body panels all around, offering good resistance to impact damage after a potential incident.



One-sided Engine Maintenance

The XE35U is designed for lower maintenance cost with longer service intervals – resulting in more machine availability on-site. Meanwhile, skilled XCMG-trained technicians are available to provide extra support when needed.



- 1 Fuel water separator
- 2 Compressor Freon fill port
- 3 Engine oil fill port
- 4 Fuel filter
- 5 Engine oil filter



Technical Specifications

Engine

XE35U

Make/model	YANMAR/3TNV88F/Tier 4F
Fuel/cooling	Diesel/Liquid, forced circulation
No. of cylinders	3
Piston displacement	1 642 cm ³ (100 in ³)
Power output	18.2 kW (24.4 hp) / 2200 rpm (ISO 14396)
Max torque	85.3-94.2 N·m (62.9-69.5 ft·lb)1320 rpm
Bore × stroke	88 mm × 90 mm (3.46 in × 3.54 in)
Alternator	12 V / 40 A

Hydraulic system

This original XCMG design allows independent and combined operations of all functions by pilot controlled levers.

> Pump

XE35U

Type	Load-sensing axial-piston pump with variable displacement
Total hydraulic capacity	108 L/min (28.5 gal/min)
AUX1 & AUX2 maximum flow rat	40 L/min (10.6 gal/min)
AUX1/AUX2 standard relief pressure	150/270 bar (2,176/3,916 psi)

> Maximum system pressure

XE35U

Boom	270 bar (3,916 psi)
Arm / bucket / travel	270 bar (3,916 psi)
Swing	206 bar (2,989 psi)

Fluid capacities

XE35U

Cooling system (radiator capacity)	8 L (2.1 gal)
Engine lubrication plus oil filter	7 L (1.85 gal)
Fuel tank	40 L (10.6 gal)
Hydraulic tank	45 L (11.9 gal)
Hydraulic system	28 L (7.4 gal)
Final drive case (each)	0.7 L (0.18 gal)

Environment

Noise levels comply with environmental regulations (dynamic values).

> Noise emission

XE35U

Noise level LpA (ISO 6396)	76 dB(A)
Noise level LwA (ISO 6395)	94 dB(A)

Drive

Each track is driven by an independent, high-torque, axial piston motor through planetary reduction gears. Two control levers provide smooth travel or counter- rotation upon demand.

> Speed & traction

XE35U

Travel speed (low - high)	2.2-3.6 km/h (1.4-2.2 mph)
Traction force	31.6 KN (7,104 lbf)
Gradeability	30°

Swing mechanism

Each track is driven by an independent, high-torque, axial piston motor through planetary reduction gears. Two control levers provide smooth travel upon demand.

> Swing system

XE35U

Boom swing, left	75°
Boom swing, right	50°
Swing speed	9 rpm

Digging forces (ISO 6015)

XE35U

Digging force, standard arm (ISO 6015)	20.3 kN (4,564 lbf)
Digging force, long arm (ISO 6015)	18 kN (4,047 lbf)
Digging force, bucket (ISO 6015)	28.6 kN (6,430 lbf)

Weight

XE35U

Operating weight with cab and bucket	4 200 kg (9,259 lb)
Ground pressure with cab and bucket	0.36 kgf/cm ² (5.12 psi)
Cab transport mass (no attachment)	4 125 kg (9,094 lb)
Operating weight with canopy and bucket	4 100 kg (9,039 lb)
Ground pressure with canopy and bucket	0.357 kgf/cm ² (5.08 psi)
Canopy transport mass (no attachment)	4 025 kg (8,874 lb)
Weight of steel tracks	448 kg (988 lb)
Weight of rubber tracks	292 kg (644 lb)
Additional weight for long arm	8 kg (18 lb)

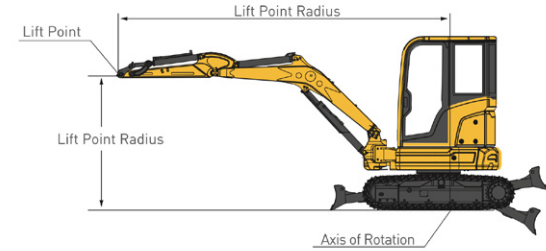


Lifting Capacities

XE35U

Cab • standard arm (1 350 mm) • standard counterweight • without bucket

Lifting point height (m/ft.in)	Over Front Blade Up/Down				Over Side				Max Radius (Mm/ft.in)
	Lift At Max Radius (Kg/lb)	2 m/6'7"	3 m/9'10"	4 m/13'1"	Lift At Max Radius (Kg/lb)	2 m/6'7"	3 m/9'10"	4 m/13'1"	
4/13'1"	852*/1,878.3		816.9*/1,801		852*/1,878.3		816.9*/1,800.9		3 337/10'11"
3/9'10"	766.7/812.6* 1,690.3/1,791.5		830.1*/1,830.1	806.8*/1,778.7	680/1,499.1		830.1/1,830.1	724.1/1,596.4	4 137/13'7"
2/6'7"	668/814.8* 1,472.7/1,796.3	1 957.3*/4,315.1	1 094.8*/2,413.6	807.1/871* 1,779.4/1,920.2	593.4/1,308.2	1 921.5/4,236.2	1 061.6*/2,340.4	714.3/1,574.8	4 570/14'12"
1/3'3"	643.5/830.4* 1,418.7/1,830.7		1 170.1/1 410.7* 2,579.6/3,110.1	789.4/975.1* 1,740.3/2,149.7	568.8/1,254		1 016.5/2,241	697.2/1,537.1	4 672/15'4"
0	667/850.4* 1,470.5/1,874.8	1 374 */3,029.2	1 145.2/1 508.3* 2,524.7/3,325.2	784.7/1 013.5* 1,730/2,234.4	591.1/1,303.1	1 374*/3,029.2	992.9/2,189	685.1/1,510.4	4 502/14'9"
-1/-3'3"	774/859.8* 1,706.4/1,895.5	2 166.6/2 181* 4,776.5/4,808.3	1 143.8/1 351.4* 2,521.6/2,979.3	778.1/868.3* 1,715.4/1,914.3	682.9/1,505.5	1 794.8/3,956.9	991.6/2,186.1	686.3/1,513	4 017/13'2"
-2/-6'7"	778.9*/1,717.2	1 299.8*/2,865.6			778.9*/1,717.2	1 299.8*/2,865.6			3 012/9'11"



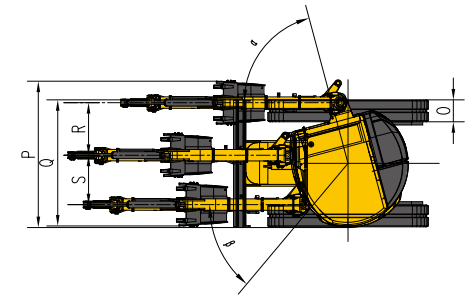
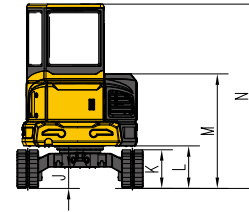
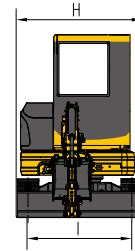
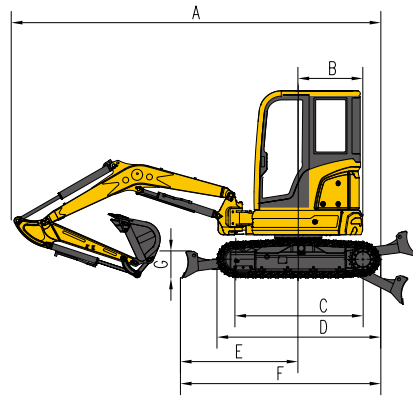
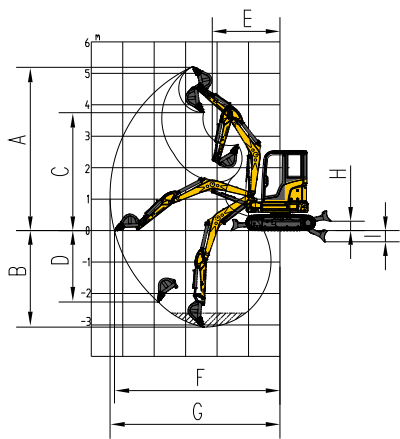
1. The lifting capacity is based on the ISO10567 standard.
2. * = The maximum lifting capacity is limited by the hydraulic capacity of the machine.
3. The lifting capacity does not exceed 87% of the hydraulic capacity or 75% of the tipping load with the machine on level and firm ground.
4. The operator should be familiar with the machines operating- and maintenance manual. Local regulations concerning the safe operation of machinery must be followed at all times.
5. The lift diagrams only covers machines that are originally built by XCMG: without lifting chains and any other lifting equipment.
6. When the excavator is used to lift or handle materials, it must comply with local regulations and be equipped with the necessary hose burst valves and an overload warning device complying with EN474-5.

Cab • long arm (1 600mm) • standard counterweight • without bucket

Lifting point height (m/ft.in)	Over Front Blade Up/Down				Over Side				Max Radius (Mm/ft.in)
	Lift At Max Radius (Kg/lb)	2 m/6'7"	3 m/9'10"	4 m/13'1"	Lift At Max Radius (Kg/lb)	2 m/6'7"	3 m/9'10"	4 m/13'1"	
4/13'1"	752.6*/1659.2		687.3*/1,515.2		752.6*/1,659.2		687.3*/1,515.2		3 620/11'11"
3/9'10"	766.7/812.6* 1,566.6/1,629.4		718.2*/1,583.4	728.8*/1,606.7	630.4*/1,389.8		718.2*/1,583.3	723.4/1,594.8	4 388/14'5"
2/6'7"	625.3/750.8* 1,378.6/1,655.2	1 957.3*/4,315.1	981.5*/2,163.8	803.5/810.1* 1,771.4/1,786	555.2/1,224		981.5*/2,163.8	710.2/1,565.7	4 763/15'8"
1/3'3"	600/773.6 1,322.8/1,705.5		1 165.5*/2,569.5	782.4/931.4 1,724.9/2,053.4	532.3/1,173.5		1 011.4/2,229.8	689.9/1,521	4 860/15'11"
0	618.8/799.1* 1,364.2/1,761.7	1 371.2*/3,023	1 132.2/1 488.5* 2,496.1/3,281.6	766.1/999.7* 1,689/2,204	548/1,208.1	1 371.2*/3,023	979.8/2,160.1	674.2/1,486.4	4 711/15'5"
-1/-3'3"	707.7/830.2* 1,560.2/1,830.3	2 132.6/2 375.7* 4,701.6lb/5,237.5	1 125.6/1 405.4* 2,481.5/3,098.4	762.5/926.5* 1,681/2,042.6	624.3/1,376.3	1 762.8/3,886.3	973.7/2,146.6	670.9/1,479.1	4 243/13'11"
-2/-6'7"	822.2*/1,812.6	1 612.4*/3,554.7			822.2*/1,812.6	1 612.4*/3,554.7			3 331/10'11"



Technical Specifications



Working range

XE35U

A	Maximum digging height-std arm	5 000mm (16'5")
	Maximum digging height-long arm	5 175mm (16'12")
B	Maximum digging depth- std arm	3 060mm (10')
	Maximum digging depth- long arm	3 264mm (10'9")
C	Maximum dumping height- std arm	3 600mm (11'10")
	Maximum dumping height - long arm	3 853mm (12'8")
D	Maximum vertical wall digging depth-std arm	2 260mm (7'5")
	Maximum vertical wall digging depth-long arm	2 384mm (7'10")
E	Minimum swing radius- std arm	2 170mm (7'1")
	Minimum swing radius- long arm	2 214mm (7'3")
F	Maximum digging reach at ground level- std arm	5 200mm (17'1")
	Maximum digging reach at ground level- long arm	5 407mm (17'9")
G	Maximum digging reach- std arm	5 300mm (17'5")
	Maximum digging reach- long arm	5 546mm (18'2")
H	Maximum dozer lifting height	305mm (12")
I	Maximum dozer cutting depth	360mm (14")

Dimensions

XE35U

A	Over length	4 960mm (16'3")
B	Tail slew radius	870mm (34")
C	Tumbler length	1 721mm (5'8")
D	Track length	2 200mm (7'3")
E	Dozer blade, maximum reach at ground level	1 590mm (5'3")
F	Undercarriage length	2 690mm (8'10")
G	Dozer blade height	367mm (14")
H	Overall width	1 740mm (5'9")
I	Track gauge	1 440mm (4'9")
J	Minimum ground clearance	297mm (12")
K	Track height	531mm (21")
L	Ground clearance of counterweight	587mm (23")
M	Over all height of tank hood	1 590mm (5'3")
N	Overall height	2 535mm (8'4")
O	Track shoe width	300mm (12")
P	Working width at maximum right-hand rotation	2 005mm (6'7")
Q	Working width at maximum left-hand rotation	1 728mm (5'8")
R	Maximum boom offset to the right	770mm (30")
S	Maximum boom offset to the left	580mm (23")
α	Maximum boom swing angle to the left	75°
β	Maximum boom swing angle to the right	50°

>Standard and Optional Equipment

Engine

Air cleaner with clogging indicator	●
Air cleaner with double filter element	●
Auto idle	●
Collecting cylinder engine oil filter	●
Collecting cylinder main fuel filter	●
Radiator auxiliary water tank	●
Fuel-water separator	●
Alternator	●

Hydraulic system

Control valve with LS relief valve	●
Pilot filter	●
Oil suction filter	●
Accumulator	●
Hydraulic oil ISO VG 46	●
Hydraulic oil ISO VG 32	○
Hydraulic oil ISO VG 68	○
Two-way piping	●
One-way/two-way piping	●
Quick coupler piping	●
Shifted block of quick coupler piping	●

Cab & interior

AM-FM radio with digital display(cab)	●
DAB bluetooth digital radio(cab)	○
All-weather soundproof steel structure cab(cab)	●
Cup holder	●
Double stereo speaker(cab)	●
Engine key switch	●
Emergency hammer(cab)	●
Fire extinguisher bracket	●
Washable floor mat	●
Footrest	●
Seat	●
Openable upper front windshield(cab)	●
Removable front lower windshield(cab)	●
Tempered glass slide window(cab)	●
Windshield wiper(cab)	●
Safe belt	●
Electric proportional joystick on left and right	●
Travel pedals with detachable manual control lever	●
Coat hook	●
High and low travel speed switch	●
Air conditioner(cab)	●
Top hatch(cab)	●
Cab light	●
Rearview mirror(cab)	●
Color LCD display	●

Undercarriage

Track tensioning mechanism	●
Tow ring on the bottom frame	●
300 mm(12") rubber track	●
Bottom sealing plate of undercarriage	●
Sealing plate of travel motor	●
One track guards for each side(with steel track)	○
Dozer	●
300 mm(12")steel track with 2x46 joints	○
One carrier roller and four bottom rollers for each side	●

Boom, arm and bucket

Boom-2.56 m(8'5")	●
Arm-1.35 m(4'5")	●
Bucket-0.12 m³(0.16 yd³)	●
Quick Coupler+thumb	●
Arm-1.6 m(5'3")	○
Bucket-0.06 m³(0.08 yd³)	○
Scarifier	○
Quick Coupler(with bucket only)	○
Breaking Hammer	○

Electrical system

Battery(1 x75AH)	●
12 V electric power port	●
Engine cooling water temperature display	●
Fuel level display	●
Engine speed display	●
Working hour meter	●
Warning of engine oil pressure and overheat	●
Charge indicator	●
Air filter blockage warning	●
Engine preheat indicator	●
Hydraulic oil temperature warning	●
Two front working light on the cab(LED)	●
Two rear lights on the cab and one on the canopy	●
One working lights on the boom(LED)	●
Rotating beacon	●

Counterweight

0.63 t(1,388.9 lb)counterweight	●
---------------------------------	---

Lubrication system

Centralized lubricating system of slewing bearing and angle boom cylinder	●
Self-lubricating bearings for boom, arm and bucket	●

Safety and guards

Lock for the cab door and each cabin(cab)	●
Warning horn	●
The quick coupler button with warning	●
Protective box for wiper motor(cab)	●
Travel parking brake	●
Swing parking brake	●
Battery disconnect switch	●
Dozer blade holding valve	●
Anti-burst valve on the boom	●
Anti-burst valve on the arm	●
Anti-burst valve guard	●
Hydraulic safety locking lever	●
Left and right rearview mirrors of cab	●
Left and right rearview mirrors of canopy	○
Reflective stickers for counterweight	●
Cab without guard mesh: TOPS; with guard mesh: TOPS, ROPS and OPG	○
Canopy with TOPS/ROPS/OPG	●

Standard: ●

Optional: ○

- Some of these standard or optional equipment may not be available for certain markets.
- Pictures may include attachments and optional equipment that are not available in your area. · Materials and specifications are subjected to change without advance notice.
- Please contact your local XCMG dealer for more information on availability or to customise your machine to suit your applications requirements.

Optimum Services , XCMG Guaranteed



XCMG approved attachments



Genuine parts



Financial solutions



Maintenance contract



Telematics

Professional Integrated Complete Solutions

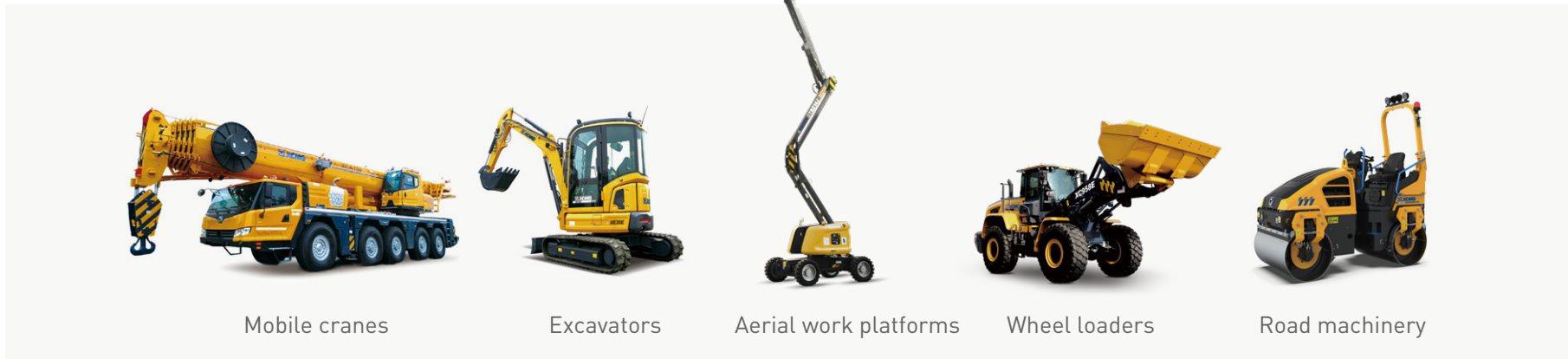
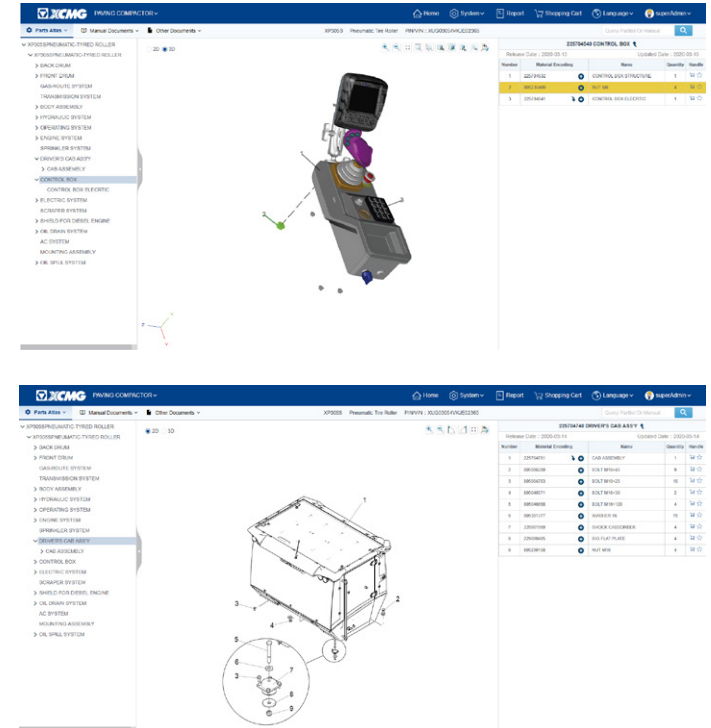
XCMG group has built a strong reputation based on the quality, reliability and durability of its construction machinery. What's more, XCMG has gradually established a service network to constantly provide its local integrated and highly efficient complete solutions for all customers.

Full Range of Services Ready for you

In order to respond to your needs as fast as possible, XCMG experts are on their way to your job site from one of our facilities near you. Full range of services are available in order to reduce your total cost of ownership and increase your revenue.



XCMG Global Spare parts System



Mobile cranes

Excavators

Aerial work platforms

Wheel loaders

Road machinery





XCMG

XCMG FOR YOUR SUCCESS

