

# Small Excavators XE80U



XCMG FOR YOUR SUCCESS

Rated Power: 54.6 kW (73.2 hp)

\*Operating Weight: 9 500 kg (20,944 lb)

Standard Bucket Capacity: 0.35 m<sup>3</sup> (0.46 yd<sup>3</sup>)

\*= With extra counterweight 250 kg (551 lb)

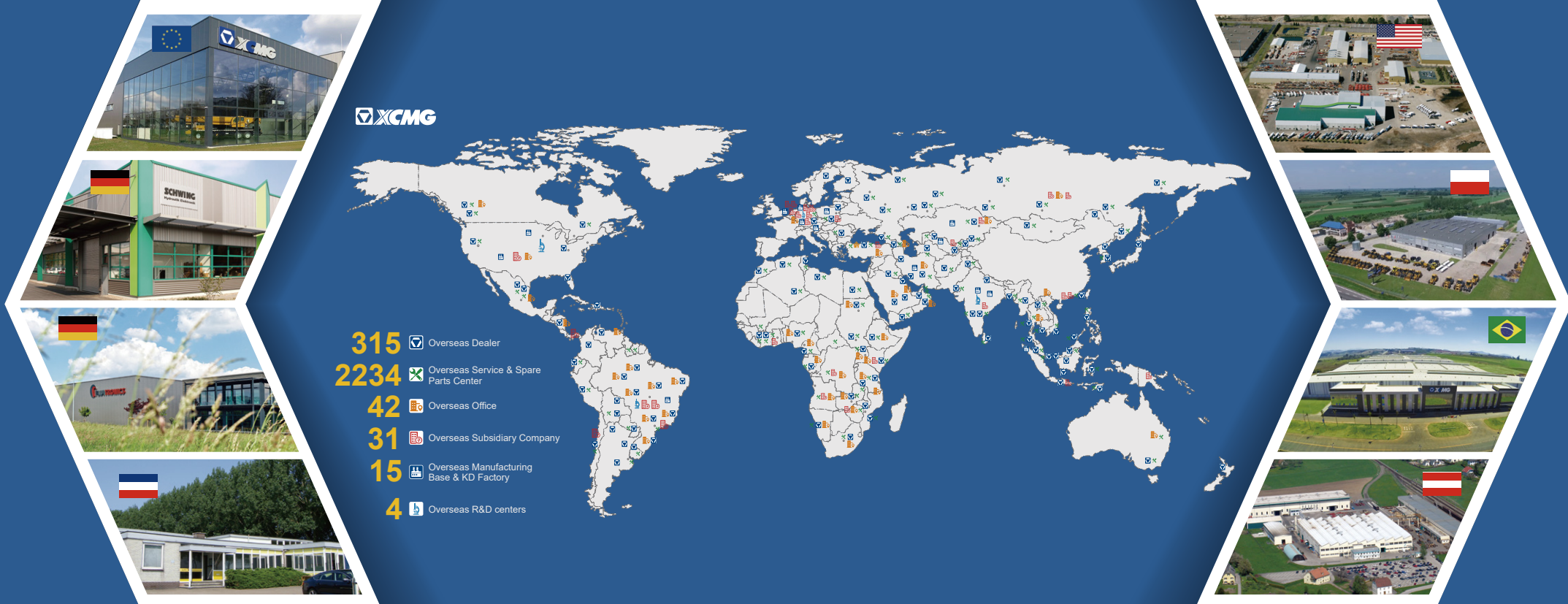
**XCMG NORTH AMERICA CORPORATION**  
Add: 5145 Schirlls St. Las Vegas, Nevada 89118  
Tel: +1 725 605 2777  
Fax: +1 725 605 2888  
E-Mail: bin@xcmg.com

**XUZHOU CONSTRUCTION MACHINERY GROUP IMP. & EXP. CO., LTD**  
Add: NO.1, Tuolanshan Road, Xuzhou Economic Developing Zone,  
Jiangsu, China 221004  
Tel: +(86) 516 8773 9285  
E-Mail: bin@xcmg.com



www.xcmg.com





# INTRODUCTION OF XCMG

Founded in 1943, XCMG is the largest enterprise in the Chinese construction machinery industry. We offer the most diverse product line and the highest technological standards. We provide a comprehensive set of construction solutions, and we are the most internationally competitive firm in the industry. On KHL Yellow Table, we rank No. 1 in China and No.3 globally.

Across our offices in China, the US, Germany, India, and Brazil, XCMG has established a global collaborative research platform including national-level R&D facilities focused on advanced smart manufacturing technology. Our R&D team consists of top talents from around the globe. They are researching cutting-edge technologies such as new energy, unmanned driving and high-end parts. Our work has earned us numerous international patents and awards.

XCMG has the most comprehensive product line, meaning we can offer fully comprehensive solutions in 9 areas: hoisting, earthwork, road building & maintenance, mining, concrete & paving, tunnel-building & underground construction, high-altitude firefighting equipment & special-purpose vehicles, railway & bridge construction, sanitation engineering. All these solutions can be customized to suit our customers' needs.

At XCMG, our five-continent sales network gives our products worldwide visibility. We have 300 overseas distributors, over 10 overseas manufacturing bases and KD (Knockdown) factories, and products in more than 180 countries and regions. We supply our global customers with pre-sales, mid-sales and after-sales service, and a convenient, efficient one-stop financing and leasing service. XCMG's total annual exports and overseas income consistently come top of the industry in China.

We care deeply for the welfare of the people. We support numerous charitable causes, and are quick to the scene during disaster relief efforts.

XCMG is all set to become an eternal brand with our feet on the ground and eyes on the horizon. XCMG's ambition leads us forever forwards. XCMG is scaling its Everest, and is determined to reach the top.

## The XE80U comes with every feature you expect from a small excavator in its tonnage.

Variable angle boom, 62° to the left and 50° to the right, reduced swing tail, and standard rubber track and angle blade give you an edge when undertaking operations in confined sites such as utility, garden, and community landscapes.

Powered by a reliable 73.2 hp Kubota engine, you can count on it to finish tough jobs in various operating conditions. When it comes to efficiency, versatility is a critical factor. That's why the machine is compatible to multiple attachments that can be installed within a short period of time with its hydraulic quick coupler. You will finish the operations with ease and comfort in the jobsite.





# Small Machine with Excellent Performance



## Performance meets Efficiency

Designed to combine power and smoothness, the XE80U is ready to take on the challenges. This short-tail machine can easily perform on your jobsites even in confined spaces. Its versatility is enhanced by two standard hydraulic circuits (AUX1 & AUX2) and precise oil flow control. High digging and lifting performance together with smooth driving performance make this XE80U an ideal machine for demanding jobs.

The Tier 4 Final common rail diesel engine with EGR, DOC, and DPF technology matches excellently with our improved hydraulic load sensing system. This combination ensures fuel-efficient and smooth control, regardless of its load. The powerful XE80U is more fuel efficient even under heaviest circumstances and it is a pleasure to operate.



## Compact design

The angle boom feature together with the short tail swing for a 20,944lb machine gives an edge to work in very narrow areas. The left and right boom swing angle is respectively 62° and 50° , which makes the operator easily capable to finish complex movements in demanding conditions such as digging parallel to a wall in a narrow driveway.

## In full control of your hydraulics

The XE80U is equipped with standard proportional controlled AUX1 and AUX2 lines and has quick coupler lines preinstalled as well . And the productivity is greatly increased since the operator can program multiple attachments from the display.

## Robust and durable design

The reinforced boom and arm can withstand heavy load and harsh breaking operations. The standard 0.46 yd<sup>3</sup> bucket is equipped with more volume of wear resistant plates to increase more than 10% life cycles. The 10-tonnage slewing bearing, with large steel ball diameter and slewing diameter, has large carrying capacity and long service life. The standard air filter with the double filtration function can help the filter fineness reach 99% in an operating environment with heavy dust so that the engine service life is greatly improved.

# Operational Comfort

## Ergonomic and Comfortable

The XE80U is designed to provide you with the best working conditions. The cab has a wide entrance door, which makes it more accessible. The standard ROPS/optional OPG cabin maximizes your safety. Features such as suspension seat, adjustable armrests, storage compartments and one powerful AC can reduce the operator's fatigue during long working hours. And the color LCD display with comprehensive machine information, along with ergonomically designed control layouts and roller switch makes your jobs easier.



# Easy Access for Maintenance

## Easy Service Access

Our XE80U was developed with particular attention to easy service access. With a single access point for the daily maintenance of all main components, fuel level gauge, and refueling through the lockable cap.



## One-sided Engine Maintenance

The XE80U is designed for lower maintenance cost with longer service intervals - resulting in more machine availability on-site. Meanwhile, skilled XCMG-trained technicians are available to provide extra support when needed.



- 1 Coolant
- 2 Air filter
- 3 Radiator
- 4 Engine postprocessor

# Excellent Visibility and Safety Features

## The Canopy Guarantees Superior Visibility

The XE80U comes with a unique canopy version in a “big” machine of in its tonnage. The four post canopy provides the operator with clear view and easy entrance and exit on the condition that safety and comfort are guaranteed. When operating in confined areas, great visibility can increase productivity. Features such as multiple rear view mirrors, working lights, handrails, emergency stop, and large entrance makes sure the operator is safe during operations.



## To Protect the Machine and Operating Sites

The routes of hydraulic pipelines and hoses are well-organized and the boom cylinder is guarded to avoid impacts and damages from rocks and other debris during operations. The continuous rubber tracks can minimize damage made to the paved operating sites. And the dozer blade is covered and equipped with holding valve to eliminate the possibility of damage when the blade is not utilized.

## To Protect the Operator and People Around

The standard ROPS/optional OPG certified cab is equipped with rotation warning beacon, emergency stop within reach, lock lever, rear mirrors on both sides, battery disconnect switch, and top lights make sure both the operator and people around the machine can be well-protected.





# Technical Specifications

## Engine

### XE80U

Make/Model	Kubota/V3307CRTE5
No. of cylinders	4
Rated power at 2200 rpm	54.6 kW/2200 rpm (73.2 hp)
Max. torque at 1500 rpm	265 N·m/1500 rpm (195 lbf·ft)
Idle (low - high)	1200-2000 rpm
Piston displacement	3.3 L (201.4 in <sup>3</sup> )
Bore x stroke	94 mm x 120 mm (3.7"x 4.7")
Starter	12 V/3.0 kW (12 V/4.0 hp)
Batteries - Alternator	12 V/3.0 kW (12 V/4.0 hp)
Air filter	Double element with automatic dust evacuation

## Undercarriage

X-type undercarriage. The heavy-duty crawler chassis is very resilient with its fully welded, stress-free structure. Long service life is ensured by the use of first-class materials: hydraulic chain adjusters with shock-absorbing return springs, lifetime-lubricated track rollers and idlers.

### > Number of rollers and track shoes per side

### XE80U

Upper rollers (standard shoe)	1(140 mm)/1(5.5")
Lower rollers	5(140 mm)/5(5.5")
Number of links & shoes	40
Overall track length	2 899 mm (9'6")

## Hydraulic Cylinders

### XE80U

Quantity Bore x rod diameter x stroke

boom	1	110x75x922 mm (4.3x2.9x36.3 in)
Arm	1	95x60x885 mm (3.7x 2.4x34.8 in)
Bucket	1	85x55x742 mm (3.4x2.2x29.2 in)
Dozer	1	120x80x157 mm (4.7x3.2x6.2 in)
Boom swing	1	110x65x592 mm (4.3x2.6x23.3 in)

## Hydraulic system

This XCMG design allows independent and combined operations of all functions by hydraulic piloted controlled levers.

### > Pump

### XE80U

Type	Displacement	Max. flow @2100rpm	Relief valve pressure
Main (load sensing)	104.3 cm <sup>3</sup> /rev (6.36 in <sup>3</sup> /rev)	219 L/min (48.2 gal)	30 MPa (4351 psi)
Load sensing pump			

### > Maximum system pressure

### XE80U

Travel	30 MPa (4351 psi)
Swing	23.5 MPa (3408 psi)
Pilot	3.5 MPa (508 psi)

## Fluid capacities

### XE80U

Fuel tank	130 L (28.6 gal)
Cooling system (radiator capacity)	14 L (3.1 gal)
Hydraulic oil tank	110 L (24.2 gal)
Engine oil	10 L (2.2 gal)
Swing drive	0.5 L (0.11 gal)
Travel device	2X1.3 L (2X0.29 gal)

## Environment

Noise levels comply with environmental regulations (dynamic values).

### > Noise emission

### XE80U

Noise level LwA	
Guaranteed	99 dB(A)
Measured	99 dB(A)
Operator LpA	72 dB(A)

## Swing mechanism

High-torque, axial piston motor with planetary reduction gear bathed in oil. Swing circle is single-row, shear type ball bearing with induction-hardened internal gear. Internal gear and pinion gear immersed in lubricant. Equipped with an automatic multi-disc slew brake.

### > Swing system

### XE80U

Max. swing speed	12 rpm
Max. swing torque	364 kgf·m (2,633 ft·lb)
Boom swing angle L/R	62°/50°

## Drive

Each track is driven by an independent, high-torque, axial piston motor through planetary reduction gears. Two control levers provide smooth travel or counter\_rotation upon demand.

### > Speed & traction

### XE80U

Travel speed (low - high)	2.7-4.9 km/h (1.68-3.04 mph)
Maximum traction force	64 kN (14,388 lbf)
Gradeability	70%/35°

## Digging forces (ISO 6015)

At power boost.

### XE80U

Digging force, standard arm (ISO 6015)	41 kN (9,217 lbf)
Digging force, bucket (ISO 6015)	64 kN (14,388 lbf)

## Weight

With 1.82 m/5'12" arm and 0.35 m<sup>3</sup>/0.46yd<sup>3</sup> bucket and extra counterweight 250 kg/551 lb

### XE80U

	Shoe width	Operating weight	Ground pressure
Rubber	450 mm (18")	8 900 kg (19,621 lb)	39.3 kPa (5.7 psi)
Steel	450 mm (18")	9 500 kg (20,944 lb)	42.8 kPa (6.2 psi)

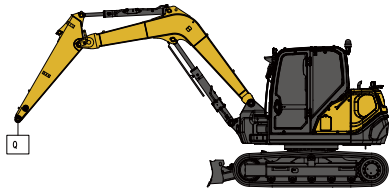


# Lifting Capacities

## XE80U

Cab • standard arm (1 823 mm/5'12") • standard counterweight and additional counterweight • without bucket

Lifting point height (m/ft.)	Over Front						Over Side						Max Radius (Mm/ft.in)		
	Lifting capacity at maximum radius(kg/lb)	1 m/3'3"	2 m/6'7"	3 m/9'10"	4 m/13'1"	5 m/16'5"	6 m/19'8"	Lifting capacity at maximum radius(kg/lb)	1 m/3'3"	2 m/6'7"	3 m/9'10"	4 m/13'1"		5 m/16'5"	6 m/19'8"
6/19'8"	1 708/3,765			*3 436/7,575	2 317/5,108			1 385/3,053			3 012/6,640	1 906/4,202			4 000/13'1"
5/16'5"	1 298/2,862			*2 712/5,979	2 360/5,203	1 659/3,657		1 056/2,328			*2 712/5,979	1 910/4,211	1 352/2,981		5 000/16'5"
4/13'1"	1 112/2,452				2 309/5,090	1 637/3,609	1 234/2,720	903/1,991				1 858/4,096	1 332/2,937	1 006/2,218	6 000/19'8"
3/9'10"	1 016/2,240					1 590/3,505	1 217/2,683	824/1,817					1 287/2,837	989/2,180	6 000/19'8"
2/6'7"	973/2,145					1 534/3,382	1 190/2,623	788/1,737					1 233/2,718	963/2,123	6 000/19'8"
1/3'3"	968/2,134					1 487/3,278	1 164/2,566	782/1,724					1 189/2,621	939/2,070	6 000/19'8"
0	1 003/2,211					1 460/3,219	1 150/2,535	810/1,786					1 164/2,566	924/2,037	6 000/19'8"
-1/-3'3"	1 090/2,403				1 984/4,374	1 456/3,210	1 153/2,542	881/1,942				1 555/3,428	1 160/2,557	926/2,041	6 000/19'8"
-2/-6'7"	*688/1,517				*1 639/3,613	*1 293/2,851		*688/1,517				1 579/3,481	1 178/2,597		5 000/16'5"

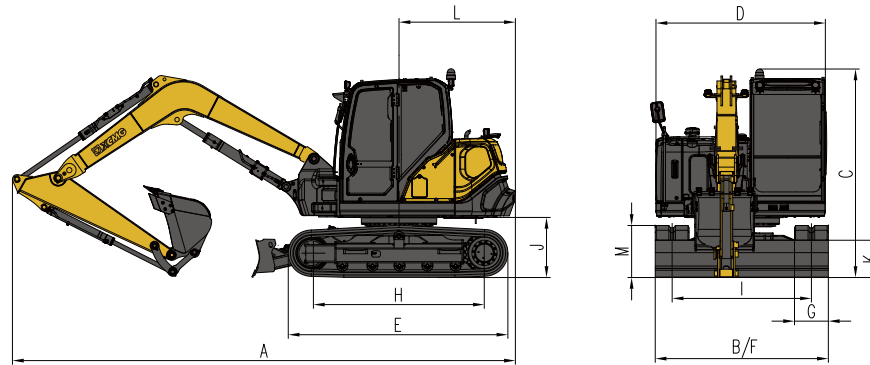
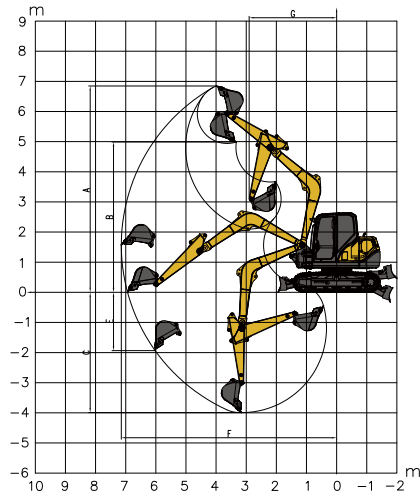


1. The lifting capacity is based on the ISO10567 standard.
2. \* = The maximum lifting capacity is limited by the hydraulic capacity of the machine.
3. The lifting capacity does not exceed 87% of the hydraulic capacity or 75% of the tipping load with the machine on level and firm ground.
4. The operator should be familiar with the machines operating- and maintenance manual. Local regulations concerning the safe operation of machinery must be followed at all times.
5. The lift diagrams only covers machines that are originally built by XCMG: without lifting chains and any other lifting equipment.
6. When the excavator is used to lift or handle materials, it must comply with local regulations and be equipped with the necessary hose burst valves and an overload warning device complying with EN474-5.





# Technical Specifications



## Working range

### XE80U

A	Max. digging height	6 850 mm (22'6")
B	Max. dumping height	4 988 mm (16'4")
C	Max. digging depth	3 993 mm (13'1")
D	Max. vertical wall digging depth	1 935 mm (6'4")
E	Max. digging reach	7 145 mm (23'5")
F	Min. swing radius	3 205mm (10'6")

## Dimensions

### XE80U

A	Overall length	6 585 mm (21'7")
B	Overall width	2 300 mm (7'7")
C	Overall height(cab)	2 730 mm (8'11")
	Overall height(canopy)	2 770 mm (9'1")
D	Width of platform	2 250 mm (7'5")
E	Length of crawler	2 900 mm (9'6")
F	Overall width of chassis	2 300 mm (7'7")
G	Width of crawler	450 mm (18")
H	Track length on ground	2 272 mm (7'5")
I	Crawler gauge	1 850 mm (6'1")
J	Clearance under counterweight	818.5 mm (32")
K	Min. ground clearance	386.5 mm (15")
L	Min. tail swing radius	1 450/1 545 mm (4'9"/5'1")
M	Height of track	692 mm (27")

## > Standard and Optional Equipment

### Engine

DOC	●
DPF	●
Fuel-water separator with water level indicator	●
Radial seal air cleaner	●
Air prefilter	●
Radiator	●
Fuel oil gauge	●
Fuel-water quickly release device	●
Auto idle	●
Refueling pump	○

### Hydraulic system

Auxiliary hydraulic valve	●
Single or dual way pipeline	●
Quick coupler piping	●
Rotary attachment pipeline	●
Hydraulic oil ISO VG 46	●
Hydraulic oil ISO VG 32	○
Hydraulic oil ISO VG 68	○
Electric proportional joysticks on the left and right	●
Spare valve plate	●
Pressure monitor gauge	●
Dozer float	●
Operation mode switching on left and right	●
Warning for Hoisting overload	●

### Cab & interior

Mechanical suspension seat	●
Up and down adjustable seat handrail	●
Front windshield divided by 70/30 ratio	●
Toughened windscreens and other toughened windows	●
Sliding upper door window	●
Air conditioner	●
Seven inches color LCD display with warning, filter / liquid refill and working hours information	●
Travel control pedal with detachable manual control lever	●
Double stereo speaker	●
Cup holder	●
Coat hook	●
Washable floor mat	●
Safety belt	●
High and low travel speed switch	●
Reserved switch for working attachment	●
Skylight	●
Windshield wiper	●
File packet	●
Emergency exit on rear window	●
Hammer for emergency escape	●
Rain visor	●

### Undercarriage

Track guards for both sides	○
2x40 joints track, 2x5 bottom rollers	●
2x1 carrier rollers	●
Tow ring on the bottom frame	●
450 mm(1'6") rubber track	●
2x40 joints, 450 mm(1'6") steel track with triple grouser shoes	○
Guard kits: Bottom sealing plate of undercarriage, sealing plate of travel motor	●
2x40 rubber track block	○
Dozer	●

### Boom, arm and bucket

Boom-3 400 mm(1'2")	●
Arm-1 823 mm(5'12")	●
0.35 m³(0.46 yd³)/868 mm(34") Bucket	●
0.33 m³(0.43 yd³)/916 mm(36") Bucket	○
0.3 m³(0.39 yd³)/805 mm(32") Bucket	○
Quick coupler	○
Thumb	○
Breaking Hammer	○
Scarifier	○
Timber grab	○

### Electrical system

Battery (950 CCA)	●
90 A alternator	●
3 kW starter motor	●
12 V cigarette lighter	●
USB interface (5 V)	●
DAB bluetooth digital radio	●
Rotating beacon	●
Two front working light on the cab(LED)	●
One rear working light on the cab(LED)	●
Two working lights on the boom(LED)	●
One rear light on the engine hood	●
12 V Electric power interface	●
Interior light	●
Rear view camera	●

### Counterweight

1.2 t (2,645 lb) counterweight	●
0.25 t (551 lb) extra counterweight	○

### Safety and guards

Lock for the cab door and each cabin	●
Warning horn	●
The quick coupler button with warning	●
Wiper motor protection box	●
Battery disconnect switch	●
Overheating warning	●
Anti-skid plate/ anti-skid paste	●
Hydraulic safety locking lever	●
Left and right rearview mirrors	●
Rearview mirror for cab	●
Anti-burst valve on the boom	●
Protective hood for anti-burst valve	●
Roll over protection system	●
Operator protective guard	○

Standard: ●

Optional: ○

· Some of these standard or optional equipment may not be available for certain markets.

· Pictures may include attachments and optional equipment that are not available in your area. · Materials and specifications are subjected to change without advance notice.

· Please contact your local XCMG dealer for more information on availability or to customise your machine to suit your applications requirements.

# Optimum Services , XCMG Guaranteed



XCMG approved attachments



Genuine parts



Financial solutions



Maintenance contract



Telematics

## Professional Integrated Complete Solutions

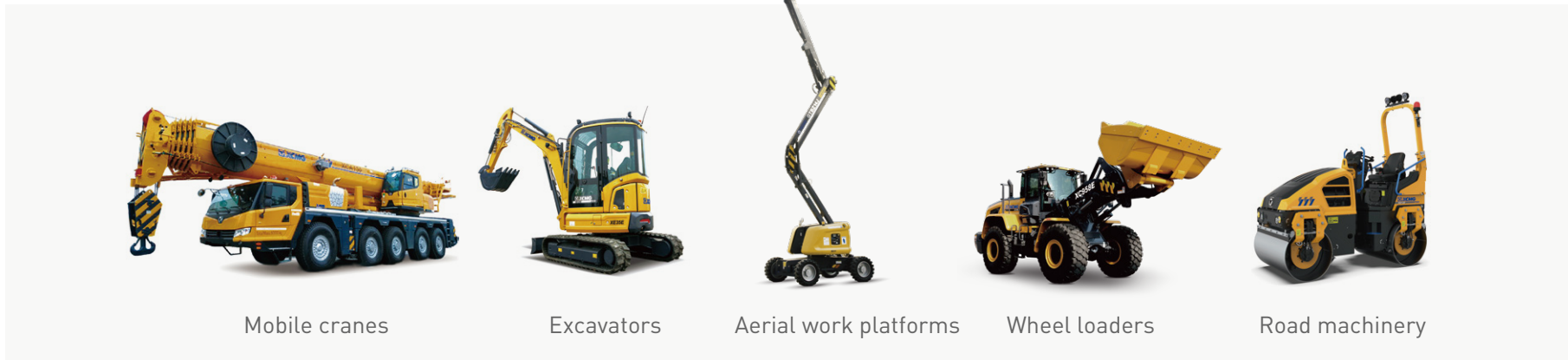
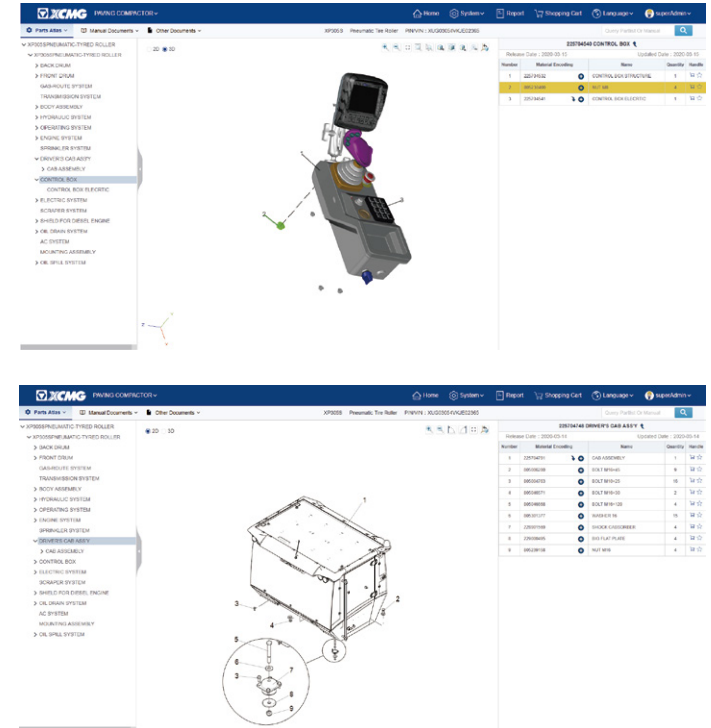
XCMG group has built a strong reputation based on the quality, reliability and durability of its construction machinery. What's more, XCMG has gradually established a service network to constantly provide its local integrated and highly efficient complete solutions for all customers.

## Full Range of Services Ready for you

In order to respond to your needs as fast as possible, XCMG experts are on their way to your job site from one of our facilities near you. Full range of services are available in order to reduce your total cost of ownership and increase your revenue.



## XCMG Global Spare parts System



Mobile cranes

Excavators

Aerial work platforms

Wheel loaders

Road machinery



# XCMG

XCMG FOR YOUR SUCCESS

